

Be fully prepared and  
confident  
**with Legal Insurance**

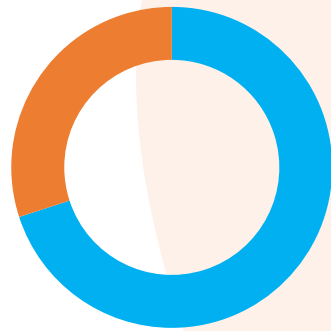
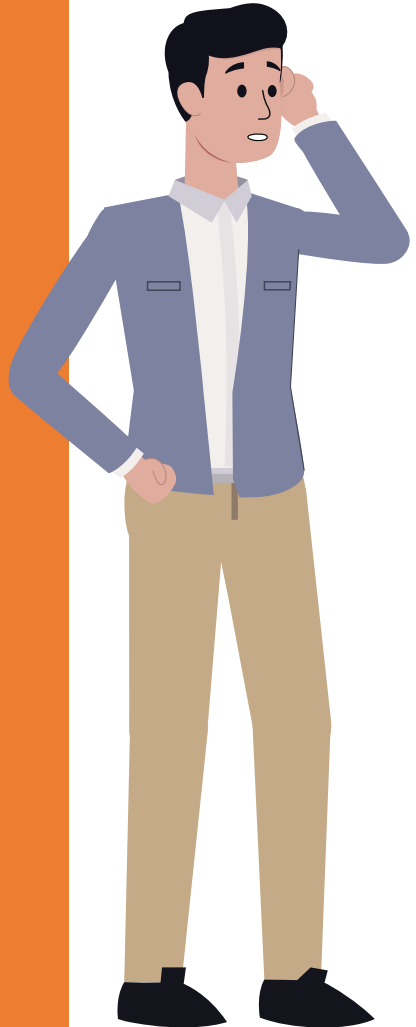
University System of Georgia

**A legal insurance plan** can ease the biggest stresses – finding and paying for legal expertise when you need it most.



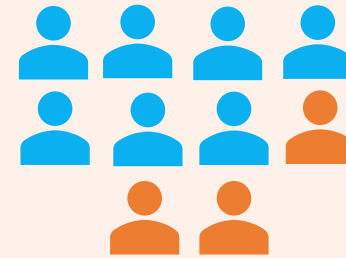
LegalEASE believes in happy and healthy employees, at work and at home.

# The Numbers



■ Affected ■ Total employees

Over **70%** of people will have the need for a lawyer in the next 12 months.<sup>1</sup>



■ Affected ■ Total employees

More than **70%** of those needing an attorney in the next 12 months don't know how to tell a good lawyer from a bad one.<sup>2</sup>

<sup>1</sup> Source: American Bar Association

<sup>2</sup> Source: American Bar Association

# The Numbers

An Attorney charges on average **\$278** per hour<sup>1</sup>.

On average, it costs **\$375** to create a will<sup>2</sup>.

## What non-members can expect to pay:

**Retainer Fee**  
**\$5,000 to \$25,000**

**+**

**Litigation Fees**  
**\$10,000 to \$50,000**

**=**

**\$15,000 to \$75,000 total**  
**cost to Employee**

<sup>1</sup> Source: LegalEASE Study, 2015

<sup>2</sup> Source: Legalzoom.com 2014

# A Legal Insurance Plan Can Assist During Life Events

## Employees In their 30s

- Will and Estate Planning
- Buying/Selling/Refinancing Your Primary Residence
- Adoptions



## Employees In their 20s

- Landlord/Tenant Dispute
- Traffic Matters



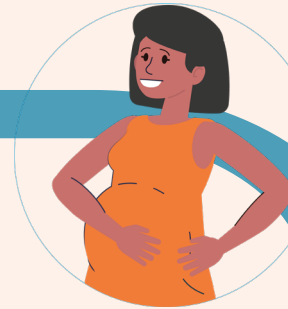
## Employees Getting Married

- Name Change
- Purchase of Primary Residence
- Guardianship/Conservatorship
- Governmental Agency Adoptions



## Employees That are Expecting

- Will and Estate Planning
- Purchase/Sale of Primary Residence
- Name Change



## Employees With Teenagers

- Traffic Matters
- Misdemeanor Defense
- Consumer Dispute



## Employees In their 40s

- Living Trust Document
- Foreclosure
- Guardian/Conservatorship



## Employees In their 60s

- Will and Estate Planning
- Living Trust Document
- Sale of Primary Residence
- Health Care Power of Attorney
- General Power of Attorney



## Employees In their 50s

- General Power of Attorney
- Living Will
- Guardianship/Conservatorship
- Living Trust Document

# Featured Benefits

## Home and Residential

- ✓ First Time Home-Buyer
- ✓ Home Equity Loan Assistance
- ✓ Property Tax Assessment
- ✓ Property Tax Dispute
- ✓ Boundary or Title Dispute
- ✓ Zoning Application

## General

- ✓ Habeas Corpus Proceedings
- ✓ Administrative Hearing Representation
- ✓ Restraining Order Assistance

## Financial & Consumer

- ✓ Garnishment Defense
- ✓ Tax Defense
- ✓ Repossession Defense
- ✓ Personal Property Protection

## Family

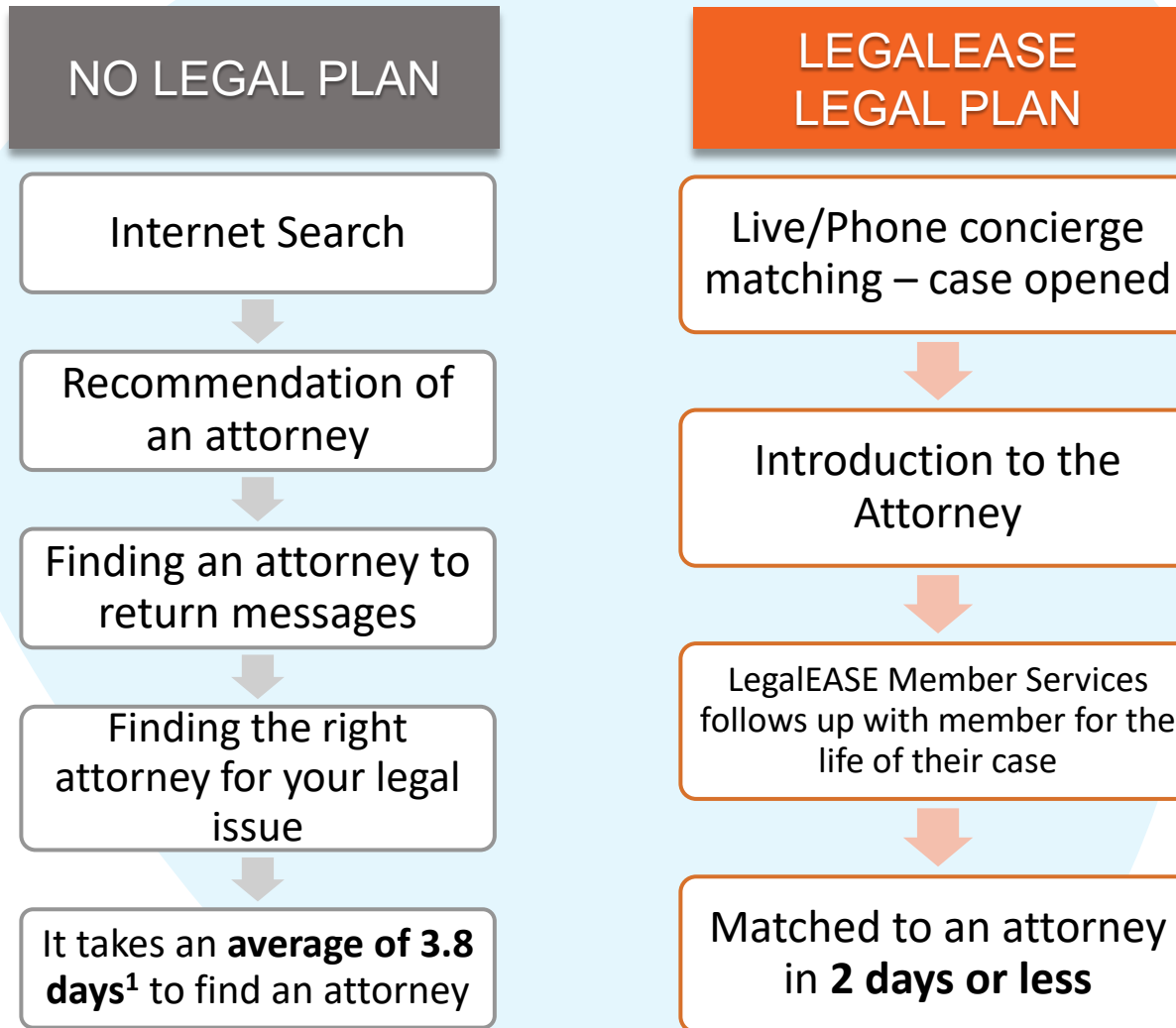
- ✓ Domestic Partnership Agreement
- ✓ Gender Identifier Change
- ✓ Egg/Sperm/Embryo Donation Agreement
- ✓ Pre-Birth/Post-Birth Parentage Order
- ✓ Child Custody/Support Involving Never- Married Parents of a Child
- ✓ Protection from Domestic Violence
- ✓ School Administrative Proceeding
- ✓ Immigration Assistance
- ✓ Parental Responsibility Matters
- ✓ Elder Matters

## Estate Planning & Wills

- ✓ Complex Will
- ✓ Funeral Directive
- ✓ Hospital Visitation Authorization
- ✓ Medicare/Medicaid/Social Security Proceeding
- ✓ Social Security Administration Benefit Appeal
- ✓ Veterans Benefits Appeal



# The Process of Finding an Attorney



 LegalEASE

<sup>1</sup> Source: LegalEASE Employee Health; Legal & Financial Stress Impact Study, 2016, Part II



# What You Get With A LegalEASE Plan

## Benefits of a LegalEASE Plan

- Coverage for in and out-of-network
- Concierge assistance navigating common legal issues



## Member Focused Care

- ✓ Live Concierge Matching with Dedicated member specialists
- ✓ 98.1% Connection Success to an attorney
- ✓ We match attorneys to your preference and needs including everything from LGBTQ to gender and religion



## Our Attorney Network

- ✓ More than 20,000 network attorneys
- ✓ Members are guaranteed access to an attorney within 23 miles of their home for covered matters
- ✓ Certified before joining and are recertified annually



Advocacy  
Help During  
the Entire  
Legal Matter

Stays with you  
from the  
beginning to  
the end

Can answer  
questions  
about the  
American  
Legal System

Follows up  
with you  
during the life  
of your legal  
matter

Will reach out  
to the attorney  
on your behalf

Advocates  
typically speak  
to about 7  
attorneys  
before  
matching



# What You Get With A Legal Insurance Plan

## Benefits of a LegalEASE Plan

- An attorney with expertise specific to your legal matter
- Access to a national network of attorneys with exceptional experience that are matched to meet your needs

## Our Vetting Process

- ✓ Board-Certified Examination
- ✓ State-Licensed – Locality of Member
- ✓ Examine their Law Practice History
- ✓ 13 Background Question Certification
- ✓ Community/Law Practice Record
- ✓ Review of E&O/Discipline Record
- ✓ Penalty of Perjury Submissions
- ✓ Insurance Requirement
- ✓ **10 years of Attorney Experience**
- ✓ Professional Conduct Code



With over 20,000 attorneys in our network, we are the **largest U.S. provider**

Attorneys are interviewed and pre-screened before matching them to a member.

# Plan Pricing

An Attorney charges on average **\$278** per hour<sup>1</sup>.

On average, it costs **\$375** to create a will<sup>2</sup>.

Instead of all those high prices, LegalEASE offers....



<sup>1</sup> Source: LegalEASE Study, 2015

<sup>2</sup> Source: Legalzoom.com 2014

# Plan Pricing

Instead of all those high prices, LegalEASE offers....

## Plan Details:

**\$15.00** monthly, via payroll deduction

Who's covered:

Employee

Spouse

Dependent Children  
Up to age 26

Parents  
Elder Benefits designed for Plan member's and Spouse's parents




# We're Here When You Need Us



For more information, visit:  
<https://www.leaseplan.com/usg>



To learn more, call:  
1(800) 248-9000



Limitations and exclusions apply. This benefit summary is intended only to highlight benefits and should not be relied upon to fully determine coverage. More complete descriptions of benefits and the terms under which they are provided are received upon enrolling in the plan. Group legal plans are administered by Legal Access Plans, L.L.C. or LegalEASE Home Office: 5151 San Felipe, Suite 2300, Houston, TX. This legal plan may not be regulated as insurance in some states, but is available in all states. Plans are underwritten by insurance carrier partners in states where required. Please contact LegalEASE for complete details.

©2023 LegalEASE All rights reserved. VSC\_INS\_Enroll\_LegalEASEPresentation\_UniversitySystemofGeorgia\_2023-11

